



INSTITUTE OF
MARITIME HISTORY

2006 FIELD SEASON

NEW CASTLE, DELAWARE SUMMARY REPORT

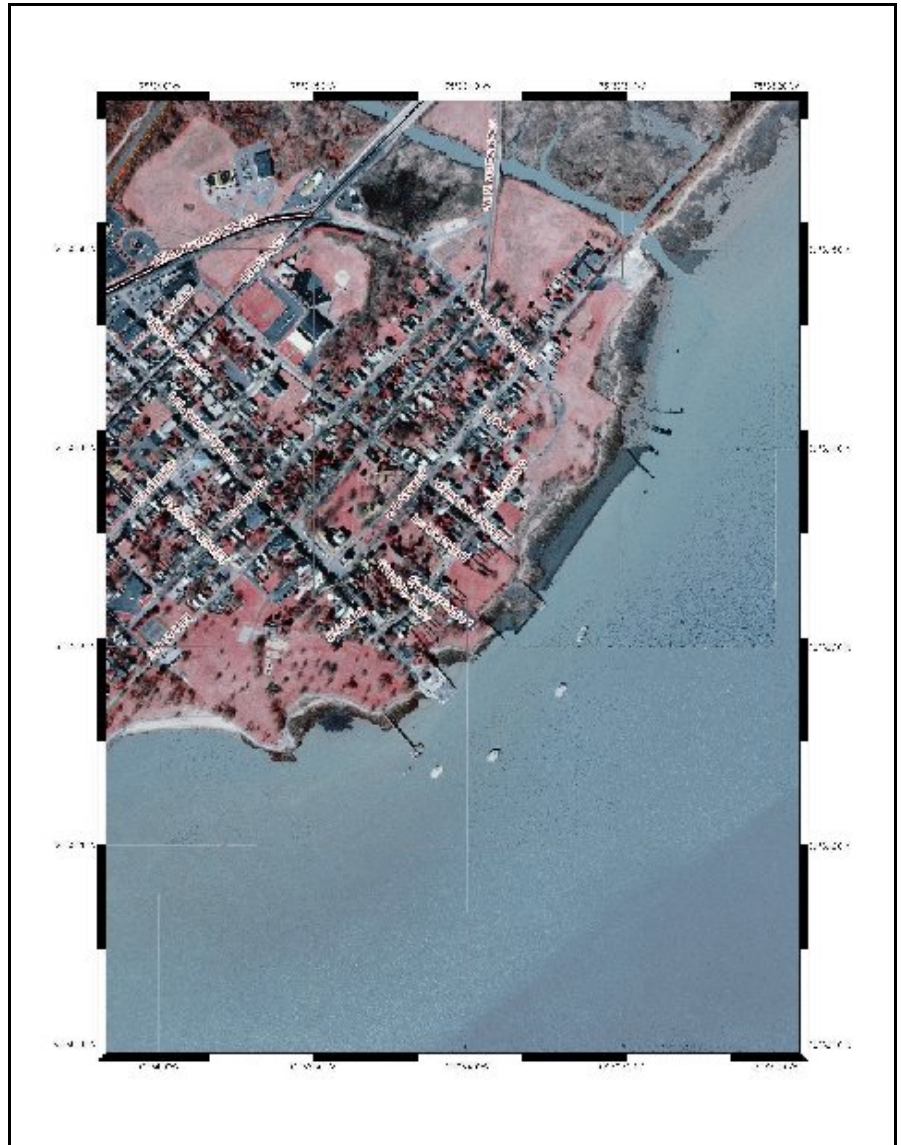


During the week of 16-22 July 2006, volunteers from the Institute of Maritime History made a reconnaissance of the historic harbor area at New Castle, under the guidance of Mr. Craig Lukezic of the Delaware Division of Historical and Cultural Affairs.

The goal was to locate and map material remains of maritime activities. A total of 26 volunteers participated..

The search area (see map) covered the waterfront from Bull Hill to Battery Park, out to the edge of the shipping channel.

We extend profound thanks to the residents and city officials of New Castle, especially to City Administrator Cathryn Thomas, Mrs. Bruce Dalleo of the Historical Society, Dr. Jim Meek, the Archaeological Society of Delaware, Chief Bill Simpson of the Good-Will Fire Company, Mrs. Miller of the Rodeway Inn, and Mrs. Deemer of the Terry House, for their hospitality and enthusiastic support.



Most of the harbor is filled in or heavily silted over. Sediment depths are more than 8 feet in places. The silt was not removed or disturbed. Many small artifacts were found along the waterfront. However, they were broken and anachronistically mingled, and appear to be landfill. Locations were recorded by GPS. Some artifacts were photographed and replaced (figures 1 through 4).



Figure 1 ceramics



Figure 2 ceramic



Figure 3 worked stones



Figure 4 cask stave?

Two large structures were found by sidescan sonar. One structure (figures 5 and 6), approximately 50 feet long, is the remains of a timber and stone "ice pier" that was destroyed by ice in January 1927.

120 Left



Right 120

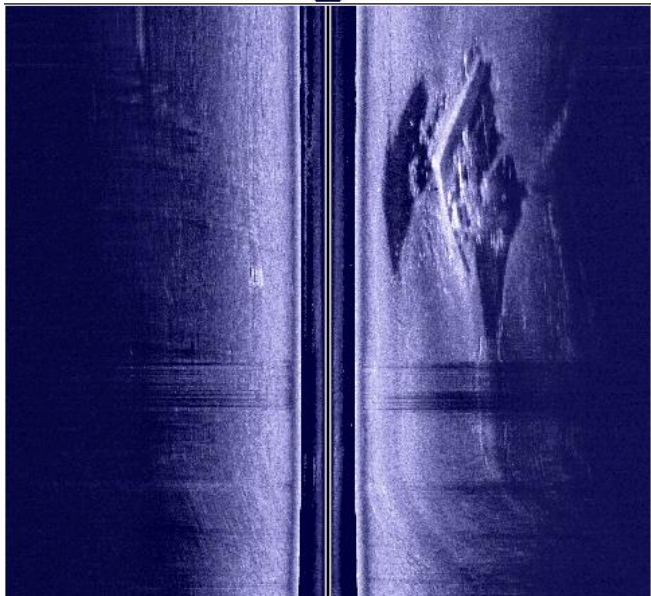


Figure 5

120 Left



Right 120

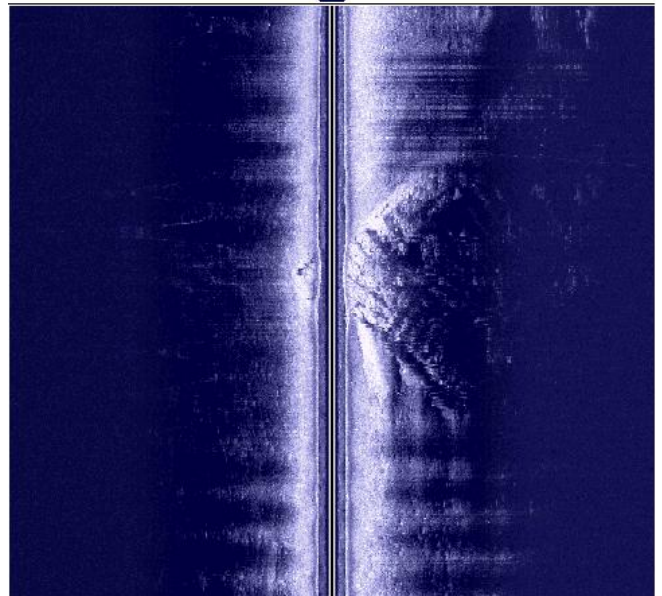


Figure 6

Seven surviving ice piers, dating from 1803 to 1880, are listed on the National Register of Historic Places (number 1982-02-04). Those piers are shown below. The colonial harbor lay inside the two 1803 piers. That area has since been filled. The sunken ice pier lies to the northeast.

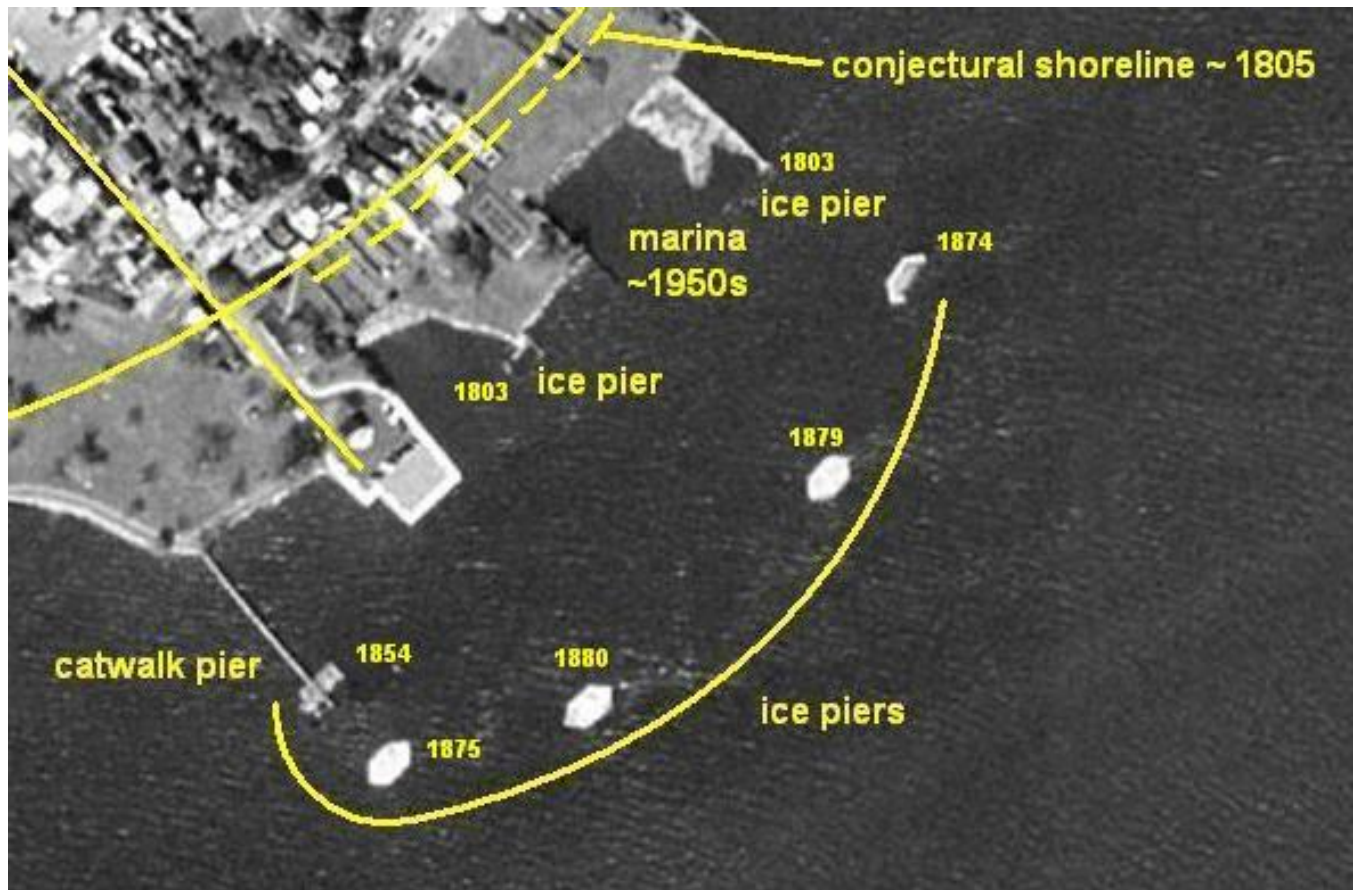


Figure 7

The other structure (figures 8 and 9) is the base of a coal pier, measuring approximately 75 by 120 feet.

40 Left



Right 40 40 Left



Right 40

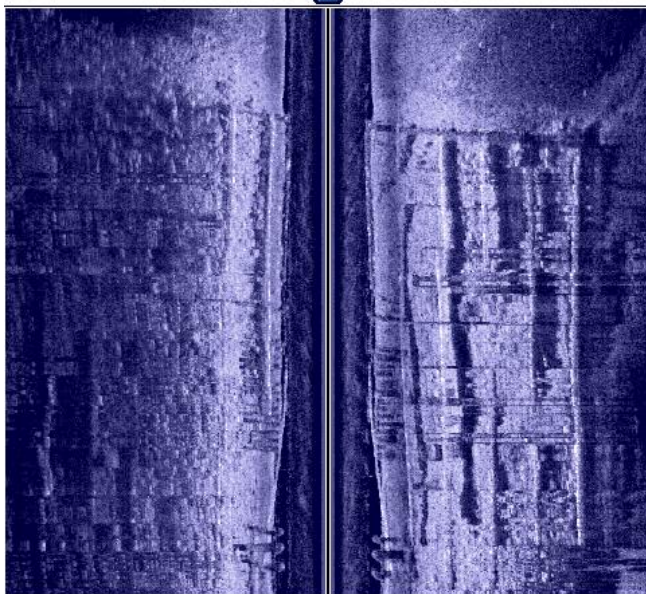


Figure 8

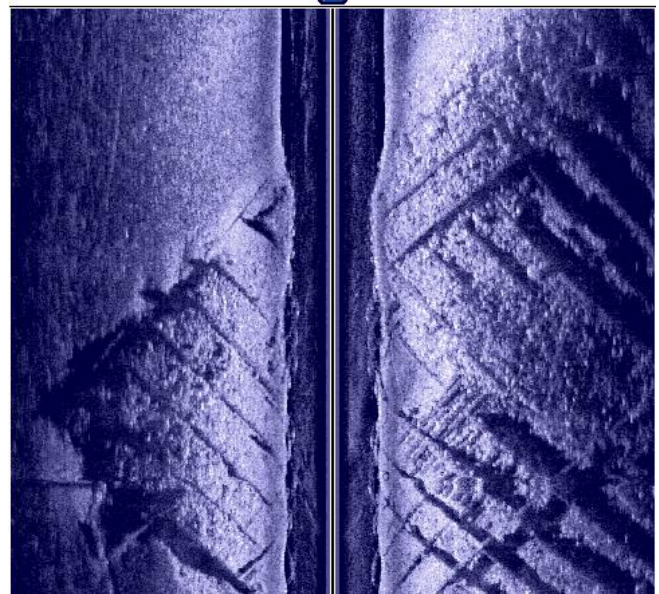


Figure 9

A detailed report will be submitted to the Delaware Division of Historical and Cultural Affairs