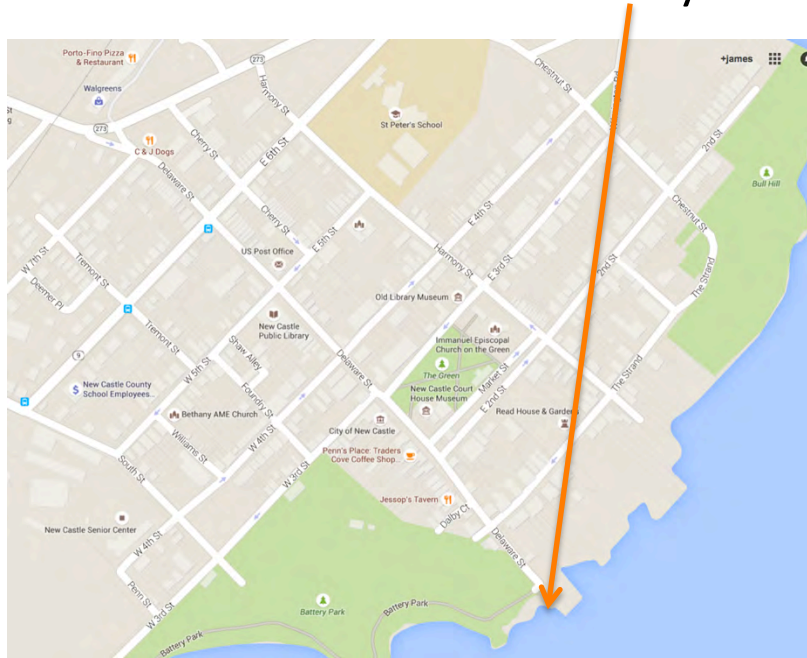


# A “quick” virtual walking tour through New Castle. Bring your dog if you have one.

Park at the end of Delaware street by Battery Park by the river.



To start, we'll briefly walk into Battery Park, then up Delaware Street and around town.

Total distance: < 1miles

Total time ~300 years.

# Virtual aerial tours and “walkabouts” are available

These would be lecture 14....

They are by Bruce Burk, and award winning videographer John Geisel

Check out the 7 links on the New Castle Weekly

<https://www.newcastleweekly.com/digital-walk-abouts>

and the Trustees of New Castle County

<https://trusteesncc.org/Video.html>

Focused on the Old Library, but wonderful aerial views of town.

# Delaware street at the river looking south at Battery Park



Ice pier, c1850

Prisoners bridge, 1946

Drying shad nets, former coal yard

coal wharf, 1860's (visible at low tide near flagpole)

Ticket booth and mockup of track  
Train waiting room



# Meet some New Castle Residents



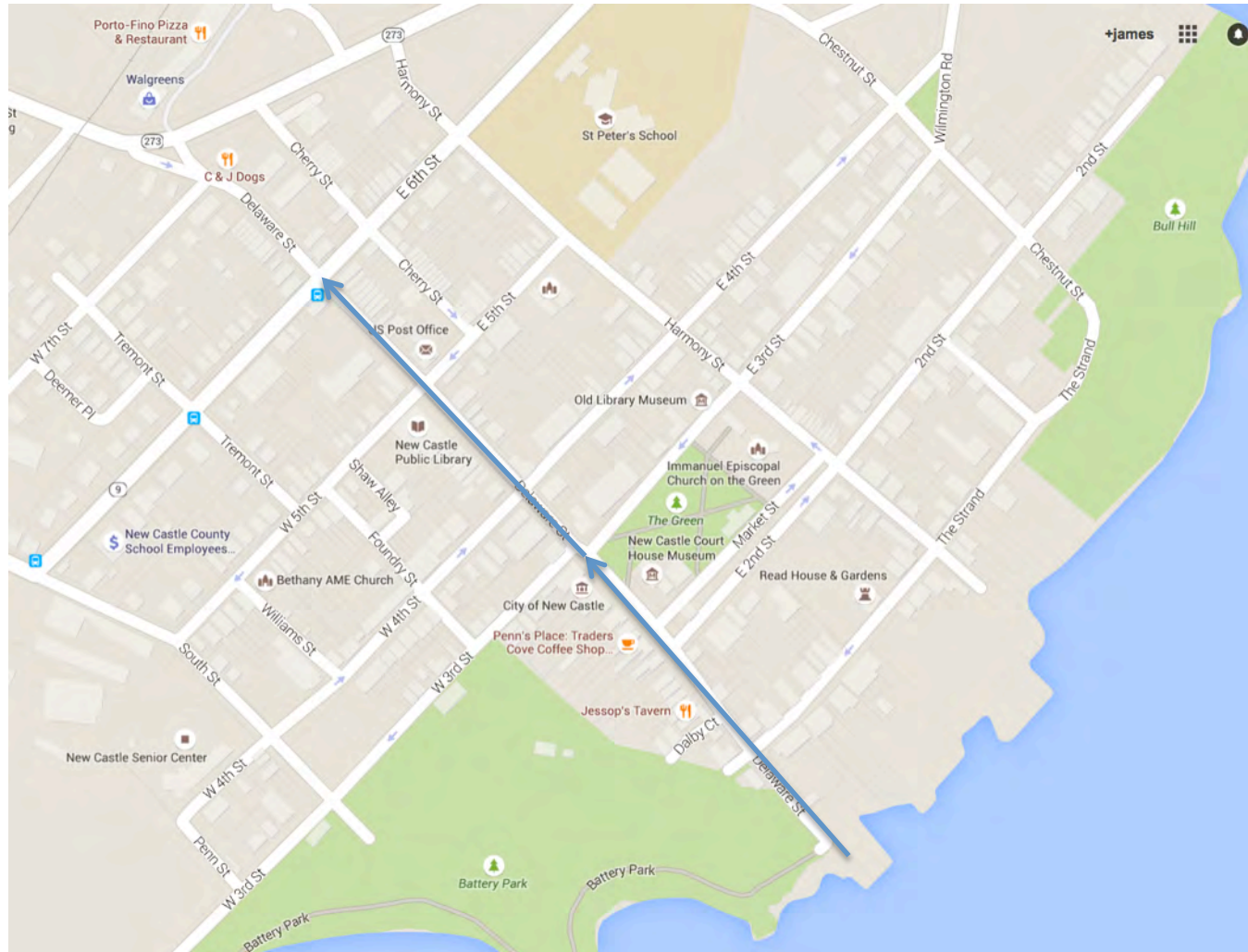
The man on the left is a UD professor interested in immigration.

The man in the middle told me about the "*Nathaniel's Nutmeg*" the book about the Dutch and the spice trade in the 1600's.

The dog is Boris, my granddog, A 12 year old pure bred long haired husky.

## A “quick” virtual walking tour through New Castle.

Park at the end of Delaware by the river. To start, we'll walk up Delaware Street from there. (Then down 6<sup>th</sup>, back 4<sup>th</sup> Over to the Green down to the Strand, up Chesnut, back 3<sup>rd</sup>.)



# Digression to horticultural history



Osage oranges on the ground after a heavy wind

Osage Orange Trees in Battery Park

These trees (aka hedgeapple) once lined the NC&FT RR Route all the way to Frenchtown

Indigenous to Texas. Lewis & Clark shipped a sample to Jefferson from St. Louis

The trees are thorny, are widely planted as a hedge (Winterthur).

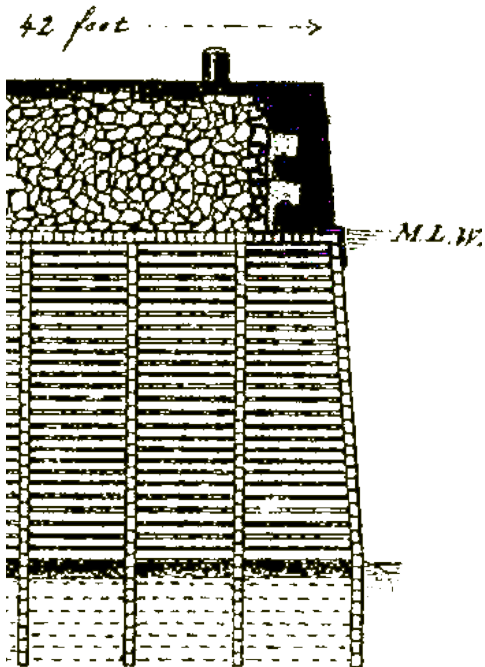


1932

Spread by man, not animals. The fruit is inedible, though squirrels tear them apart. Possibly once a food of “pleistocene mega fauna”, e.g. giant sloths, mastodons

# Ice Piers/Ice Breakers

Constructed by town (1794), the U. S. Corps A.E 1804-1882



4-6 courses of Maine granite on an underwater wooden crib all filled with rock

Cost to repair (1990)  
\$1 million each.  
The Corps declines.

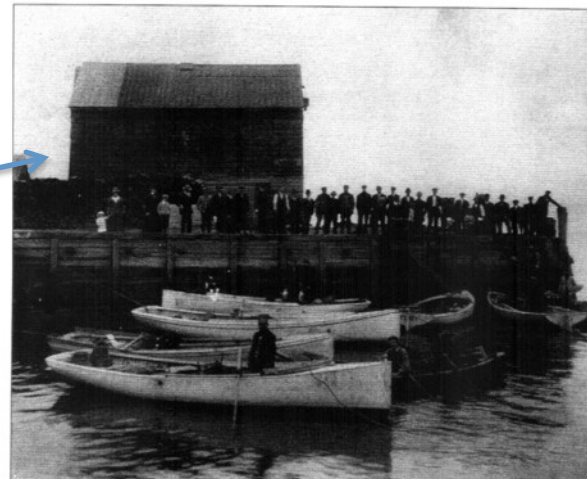


Sanborn Map, 1925



# Wharf Area

“Banks Building”, 1871-2017, grain office Wm. H. Jefferson, coal office, telegraph office, >1960 ‘Senator’s Office’



Coal Wharf  
1860's



The remnants of the coal wharf are visible next to the flagpole at low tide.



Madison

# Delaware Street wharf, looking North



Memorial Bridge

Ice piers

Harbor filled with shad skiffs

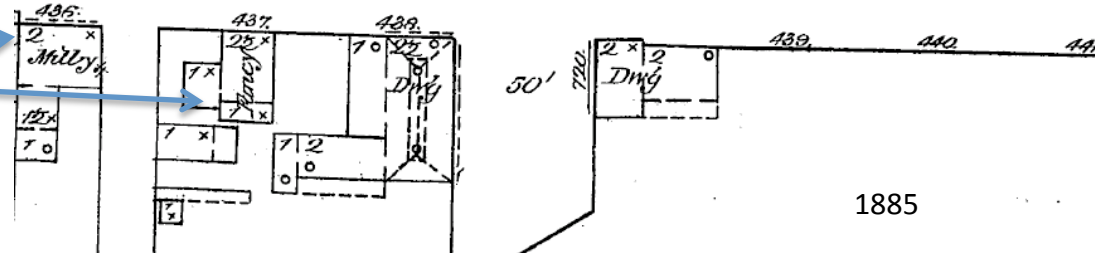
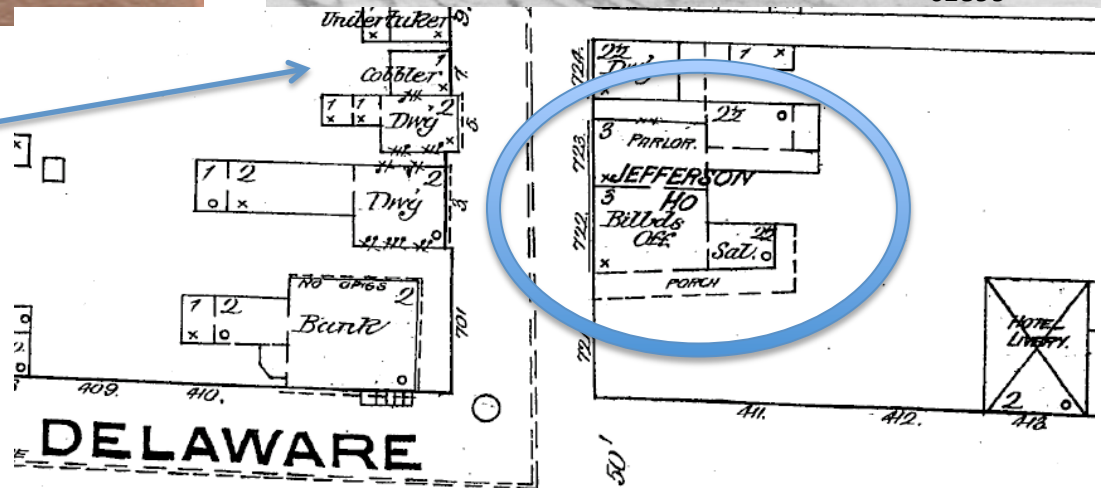


1878?

The Strand  
Cobbler, Undertaker

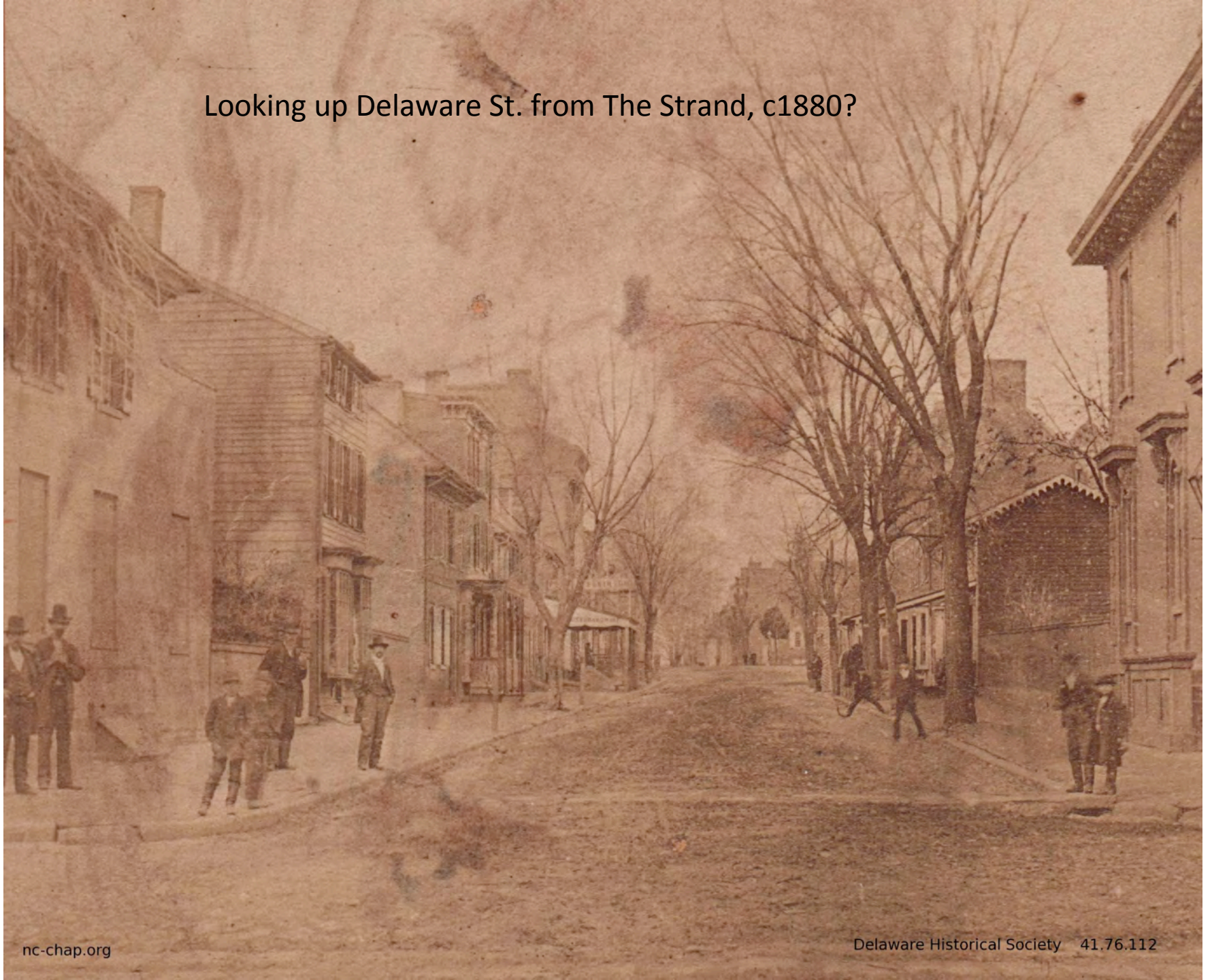
Jefferson House Hotel  
Parlor, Billiards, Sal. (?)  
Ice cream in back

Fancy goods, millinery



1885

Looking up Delaware St. from The Strand, c1880?



# Van Leuvenigh House

2 The Strand (c1750)



String course



Farmers Bank (1845, NHR)  
Burglary 1887, Richard G. Cooper,  
Mgr. shot assailant



Van Leuvenigh  
c1750

Gunning Bedford (c1730),  
McWilliams (c1720)

“Burnt Lot”, 1722, Col. John French

Latrobe, 1805



# Rosemont House, 110 Delaware

Martin Rosemont (1675?);

Star Hotel, 112 Delaware, Wm. Shearer, prop (1870)

Jessops



Shallow pitched roof

Bracketed Cornice

String course

6/9 windows

Water table



113 Delaware Street  
before and after  
Colonial Revivalization

Colonial revival



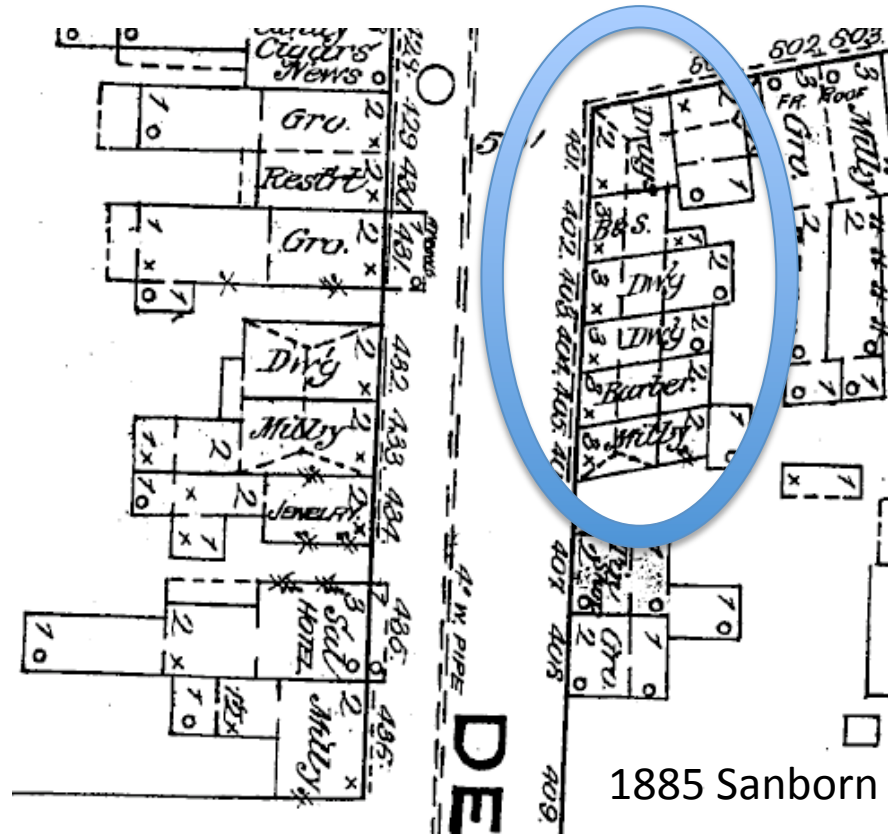
Wooden duplex: barbershop,  
shoe repair shop c1930; tin  
shop & grocery in 1885.

Behind it were stables once  
rented to NC&FT RR (182) for  
Horses to pull the trains



# Cloud's Row, 117-124 Delaware, 1803

Original lot only 25' deep so each unit was only one room 16' deep, then more land purchased and a second room added to 1<sup>st</sup> floor. No rooms are rectangular!



1885 Sanborn

West: Hotel, Candy, Grocery,  
Restaurant, Grocery, Dwelling,  
Millinery, Jewelry, Hotel,  
Millinery, Fancy Gds, Dwelling

East: Drugstore, B&S (?), Dwelling  
Laundry, Barber, Millinery, Tin Shop  
Grocery, Bank

Historical American Building Survey, 1930's

# Where do I get all this stuff?? Lots from <http://nc-chap.org/resources>

- Theses

[William F. Holmes](#), 1961, "The New Castle And Frenchtown Turnpike and Railroad Company 1809-1838" (29 mb) ←

[Eliza Wolcott Morehead](#), 1971, "George Read (II) and His House" ←

[Louise B. Heite](#), 1978, "New Castle under the Duke of York" ←

[Lucille Toro](#), 1971, "The Latrobe Survey of New Castle". ←

[Robert Curtice Cottrell](#), 1991, "Town Planning in New Castle, Delaware, 1797-1838" (3 Mb)

[Kristen Wildes](#), 2003, "The Preservation of Historic New Castle: A Study in Perceptions"

[Elizabeth Peebles](#), 2010, "The moderate and the modern Aladdin buildings in Delaware 1914 - 1920". Includes kit-built 166 W. 3rd. ←

- Student Papers

[Madelyn Ladner](#), 1983, Practice NRHP nomination form for L. E and J. T. Eliason Houses, 72, 80 W 5th St. ←

[Stuart P. Dixon](#), 1983, Practice NHRP nomination for "Ira Lunt House Complex", 227 Chestnut Street (pdf 7 mb) ←

[Annette Woolard-Provine](#), 1983, Practice NHRP nomination for Mt. Salem Methodist Episcopal Church, 138 E. Fourth St.

[Susan Williams](#), 1988, "The John Wiley House -- An Urban Case Study in Federal New Castle", 18 E 3rd St. (pdf, 8MB) ←

[Julia \(Wellman\) Hess](#), 1989, "Changes in an Old New Castle Row House", Cloud's Row ←

[Constance Anderton](#), 1992, "A Brief Study of the McWilliam House, (Number 8, The Strand, New Castle) During the Eighteenth Century (pdf, 1.5 mb) ←

[Ellen \(Felser\) Morfeji](#), 1993/4, "Symbol of Social Change: The Archibald Alexander House" (26-28 E. 3rd St.)

[Eric J. Borden](#), 1997, "Booth House 212-214 Delaware Street"

[Elizabeth W. Garrett](#), 2004, "Purpose Built: The George B. Rodney House and Law Office 14-16 E. Third St., New Castle, Delaware" (pdf, 1.7 mb)

[Amy S. Mann](#), 2004, "The Middle Class in Nineteenth Century New Castle: 127-129 Harmony Street and the Family Who Built It"

[Rachel Delphia](#), 2004, "Separated Spaces, Multiple Uses: Exploring Family Living and Tenancy in the Hugh Mercer House, 1803-1830." 126 Harmony St.

[Lisa Minardi](#), 2004, "All in the Family: Sociability and Service in the Darragh Household", 19 E 2nd

[Justina Barrett](#). 2004. "The embedded meanings of Front Street: The tension between

# Jessop's, ??, Dalby House

114, 116, 118 Delaware



Jessop's:

"A cooper named Abraham Jessop built it in 1674. Then residences and businesses. 1950's 'Captain's Log Restaurant.

1974 'The Green Frog'  
1996 Owned by the Day family and called 'Jessops'"

R. Day

120 Delaware  
Scully Realty  
E.V. Platt House & Shoe store  
...  
Eliakim Hussey, cooper, 1738

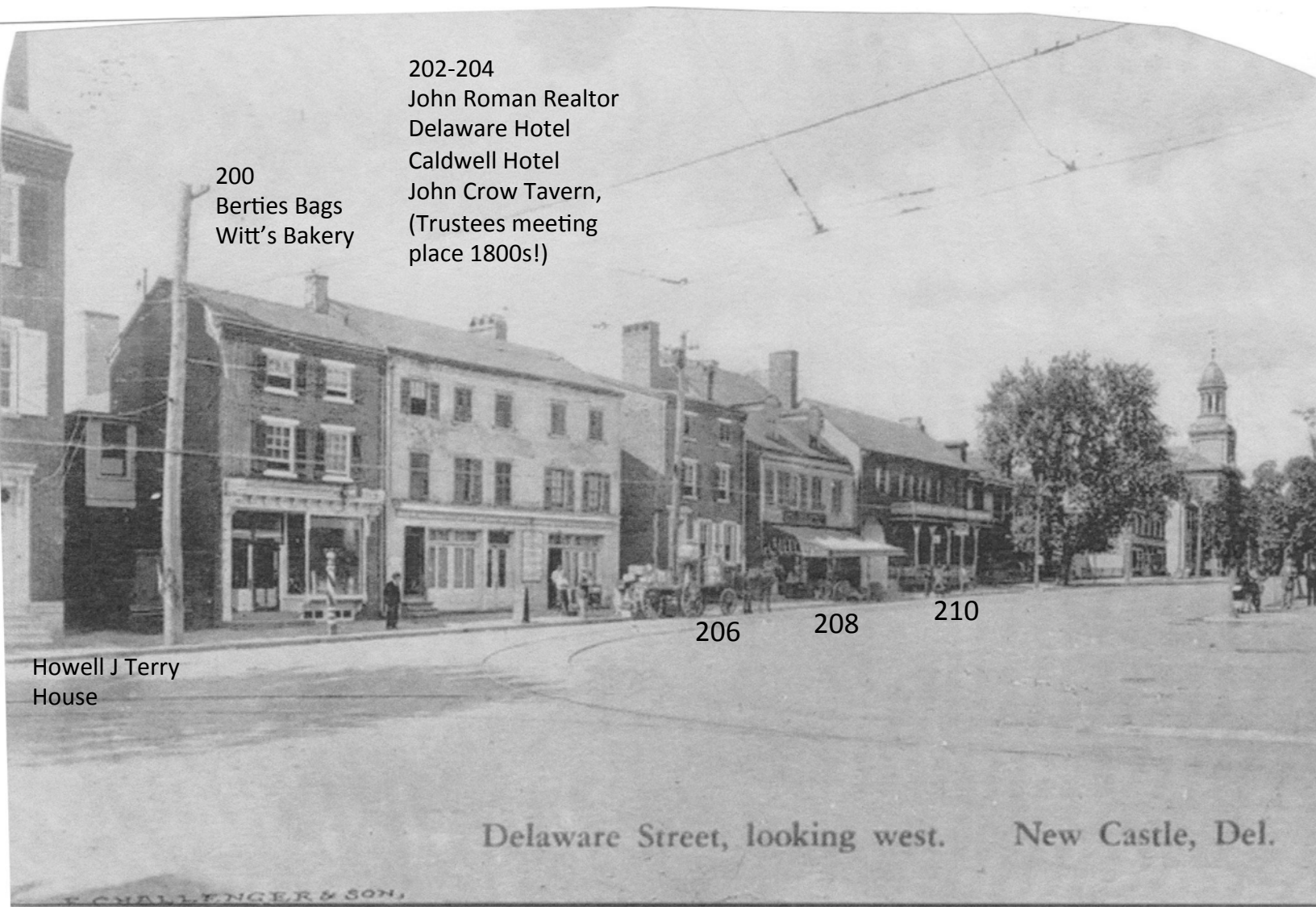


122-124 Delaware  
Nora Lees  
E.V. Platt grocery  
(with wood awning)

Two wood houses → brick >1867



# Courthouse Square – Then (c1910???)



200  
Berties Bags  
Witt's Bakery

202-204  
John Roman Realtor  
Delaware Hotel  
Caldwell Hotel  
John Crow Tavern,  
(Trustees meeting  
place 1800s!)

Howell J Terry  
House

206      208      210

206  
William Penn  
House

208  
Foresite Assoc  
Haut Appliance,  
Burriss Tea  
Room

...  
Wm. Janvier

210  
M&T Bank,  
Acme, American  
Store Grocery,  
Gilpin House  
Inn/Tavern

Delaware Street, looking west.      New Castle, Del.

CHALLENGER & SON

# Courthouse Square -- Now



200  
Berties Bags  
Witt's Bakery

202-204 -- Galleries  
John Roman Realtor  
Delaware Hotel  
Caldwell Hotel  
John Crow Tavern,  
(Trustees meeting  
place 1800s!)

Terry House  
B&B

206

208

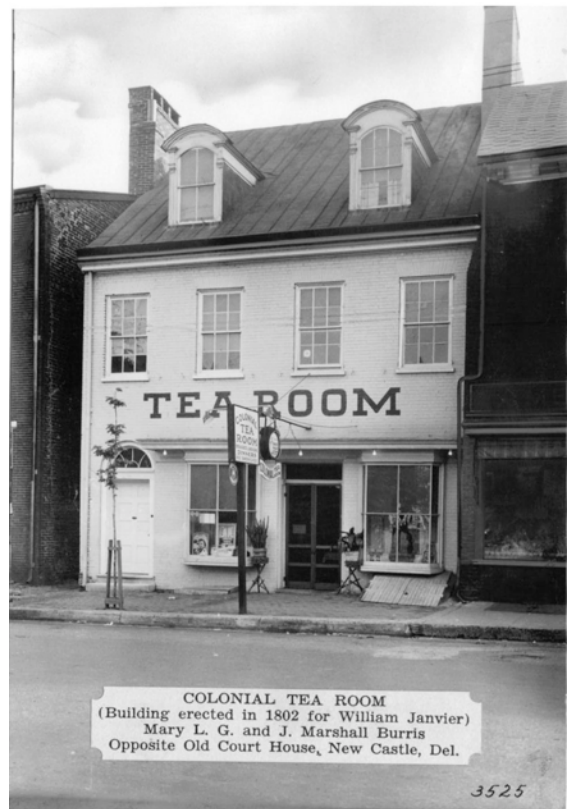
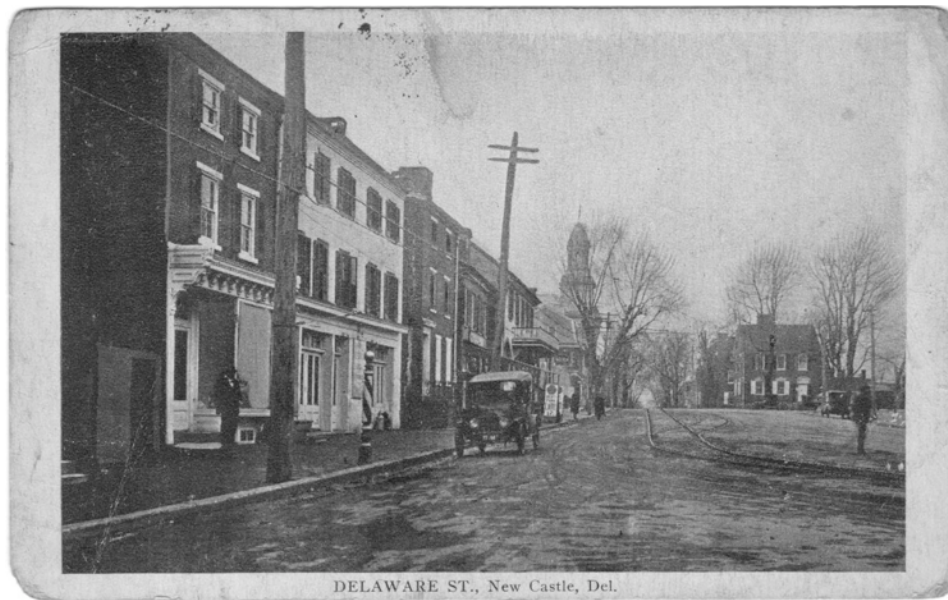
210

206  
William Penn  
House

208  
Foresite Assoc.  
Haut Appliance,  
Burriss Tea  
Room

...  
Wm. Janvier

210  
M&T Bank,  
Acme, American  
Store Grocery,  
Gilpin House  
Inn/Tavern



# Gilpin House Hotel & Tavern M&T Bank

210 Delaware, (early 1700s , NHR)



Delawa

1904



# Courthouse – State Capitol to 1777, County Seat to 1881

Fireproof wing (1845)

1732 section

1756, 1802 section



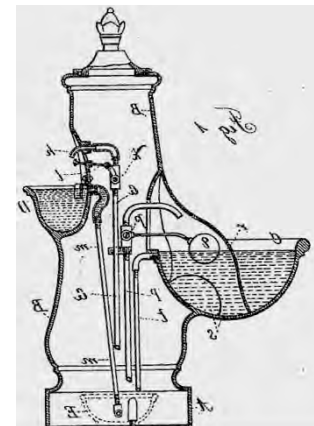
Judges' Bench (3)  
Jury (12)  
Prisoner's Box



## Memorial Fountain c1900

A great watering stop for man and dog, and once for your horse  
The first two are functioning. The last one is now for flowers.

Made by a company in Chicago; a catalog shows a similar one for \$600  
Probably a gift to New Castle, by Mrs. Burgie who moved here in memory  
of her son.



# Booth House

212 Delaware

Left: 1795 (Late Georgian)

Middle <1719 (Early Georgian)

Right: 1860s

All covered by stucco in 1800's like many buildings in town;  
removed since 1950



City Hall, New Castle Trust, 220 Delaware, Beaux Arts Style (1917)

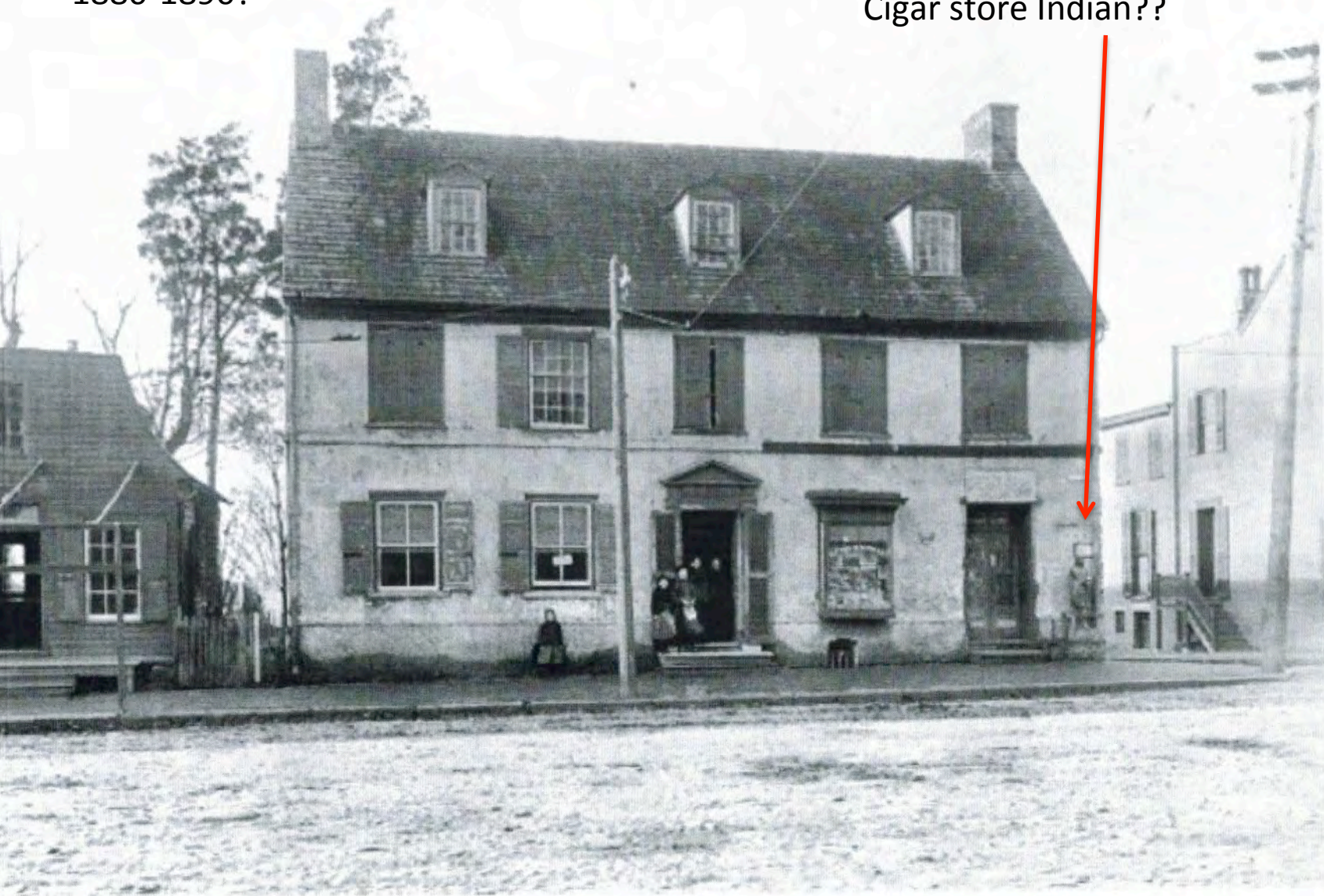
Booth House/David Finney Inn, 222-224 Delaware, heavily modified early Georgian  
(c1740/1900)

N. Van Dyke Jr., 300 Delaware, Federal, (1820)



1880-1890?

Cigar store Indian??



## Remember 3<sup>rd</sup> & Delaware from Lecture 7, the Civil War?

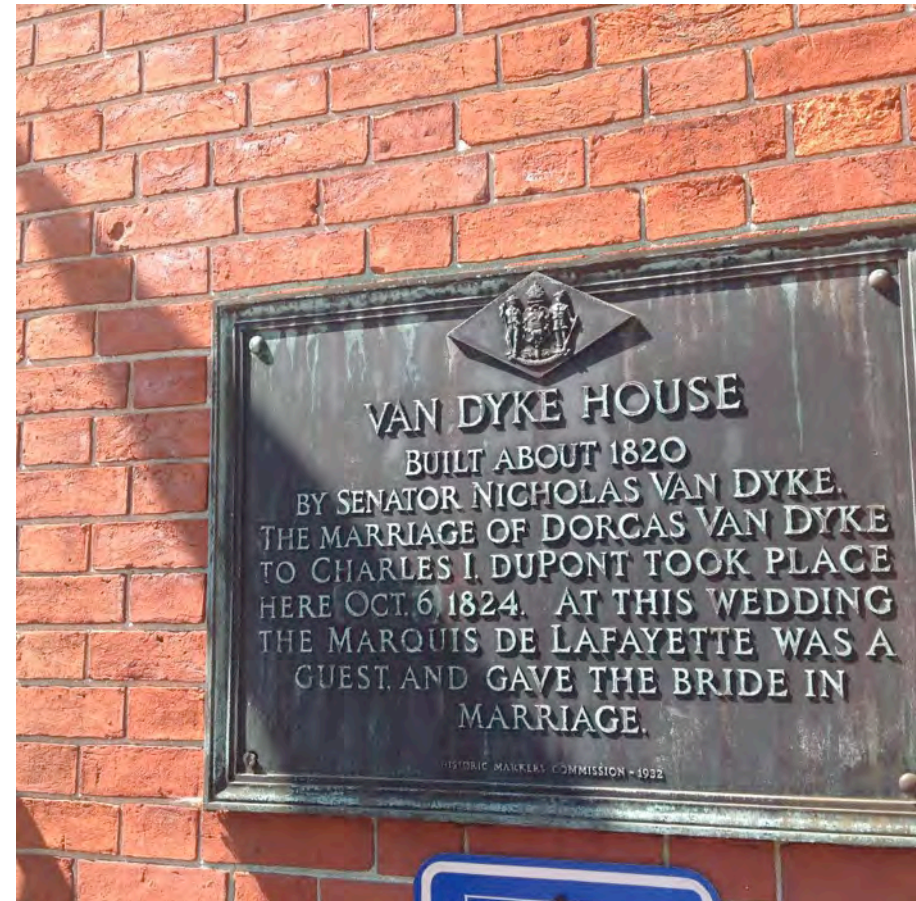


- Home of U. S. Senator Nicholas Van Dyke Jr. who voted against Missouri Compromise
- Boyhood home of John Johns, who was battlefield chaplain to confederate troops
- “Little Yellow house”: 1860, 1870 home of woman who refuses to sign “Lincoln’s oath of allegiance”, fled to slave plantation in Ark.

# Nicholas Van Dyke Jr.

Federal (1820)

Tavern, Sen. Van Dyke Jr., David Boulden, [Cal Marshall, Michael Quaranta]



# Opera House and adjacent Enos House



Built by Masons and Odd  
fellow (IOOF) 1879  
1<sup>st</sup> floor stores,  
2<sup>nd</sup> floor hall  
3<sup>rd</sup> floor meeting rooms



# Enos House, Bridgewater's Jewelers since 1800's

1700's (NHR) (Water table, string course hidden under stucco?)



# 4<sup>th</sup> & Delaware

The best place in America to see the transition from Georgian to Federal

David Ames, Director UD Center for Historic Architecture and Design



Nicholas Van Dyke Jr. House (1799)

Amstel House (c1730)

c1840

Enos House (early 1700's)



Kensy Johns, Jr. , c1823



Immersive panorama:

<https://www.360cities.net/image/amstel-house-new-castle-delaware-usa>

# Tobin's Butcher Shop

414 Delaware, G. Tobin Jr, c1920



2 W. 5<sup>th</sup>? G. Tobin Sr. c1885



# Residence of Rev. J. B. Spottswood

421 Delaware, built c1875. He was pastor from 1842-1883

|            |           |      |   |         |          |
|------------|-----------|------|---|---------|----------|
| Spottswood | John B    | 52 M | W | Va      |          |
| Spottswood | Sarah W   | 51 F | W | Pa      |          |
| Spottswood | Susan     | 21 F | W | Va      |          |
| Spottswood | Virginia  | 19 F | W | Md      |          |
| Spottswood | Anna      | 14 F | W | Del     |          |
| Spottswood | Lucy      | 12 F | W | Del     |          |
| Spottswood | Caroline  | 8 F  | W | Del     |          |
| Willing    | Elizabeth | 23 F | W | Pa      |          |
| Spottswood | Charlott  | 14 F | W | N.Y.    |          |
| McGuire    | Caroline  | 22 F | W | Ireland | Domestic |



Hagley Museum and Library

# Delaware at 5<sup>th</sup>

Shaw/Robinson House

Library (1964, 2010)

Knights Pythias,  
Earle Theatre,  
Apartments



Herbert House, Convent

# Architectural Diversity -- Vernacular Architecture

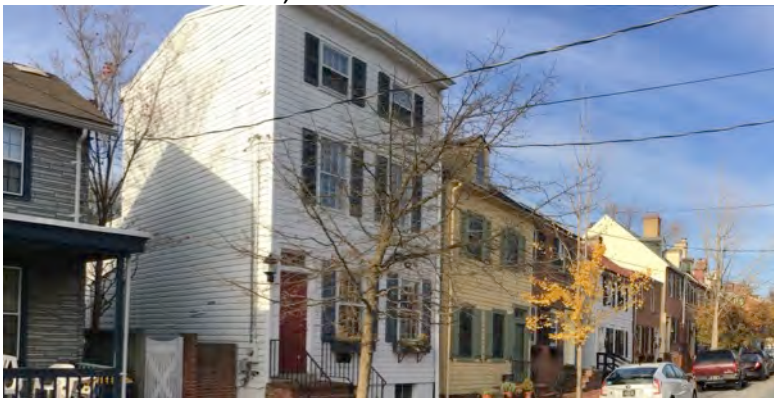
West 5<sup>th</sup>, north side



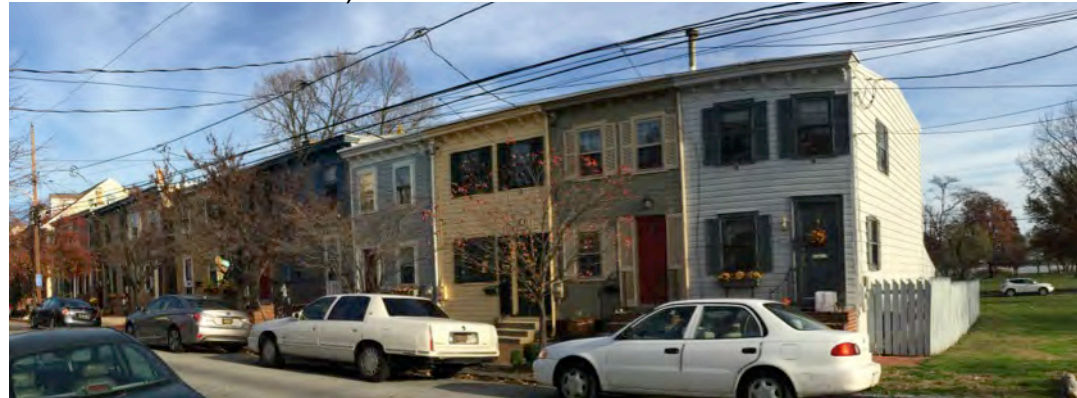
Delaware at 6<sup>th</sup> St.



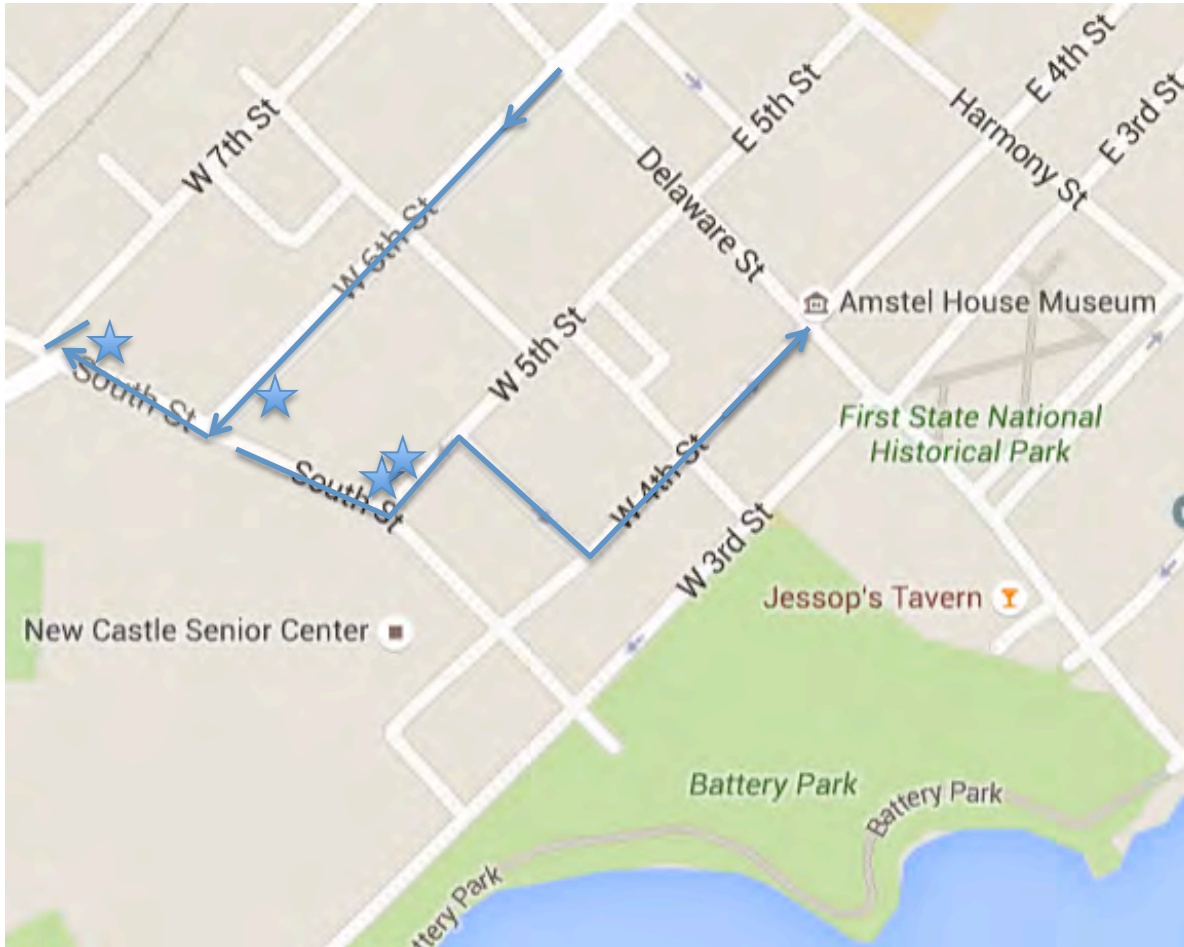
West 4<sup>th</sup>, North side



West 4<sup>th</sup> St, South side



Go West on W 6th St.  
Visit Lesley Mansion  
Then Return To Delaware via W 5<sup>th</sup> & W4th



# Queen Anne –c 1895

Cross gables, bay window, porch, fish scale siding, colorfull

80 W 5<sup>th</sup> St. J. T. Eliason (1899)



72 W 5<sup>th</sup>, L. E. Eliason (1894)



110 W 6<sup>th</sup>, F. Haut (c1898)





# Lesley Mansion, 123 W 7<sup>th</sup> Dr. Allen V. Lesley, 1855 From N.Y.

Physician, amateur artist; drew illustration for 1849 Rea & Price map  
Later owned by Seldon Deemer,  
Then Travers family, then a B&B, now Wrights



Gothic Revival: Steep pitched roof, cross gables, one story porch,  
v-shaped barge boards, 2/1 windows



15 W 4<sup>th</sup>, Platt House, c1878  
Bracketed Italianate

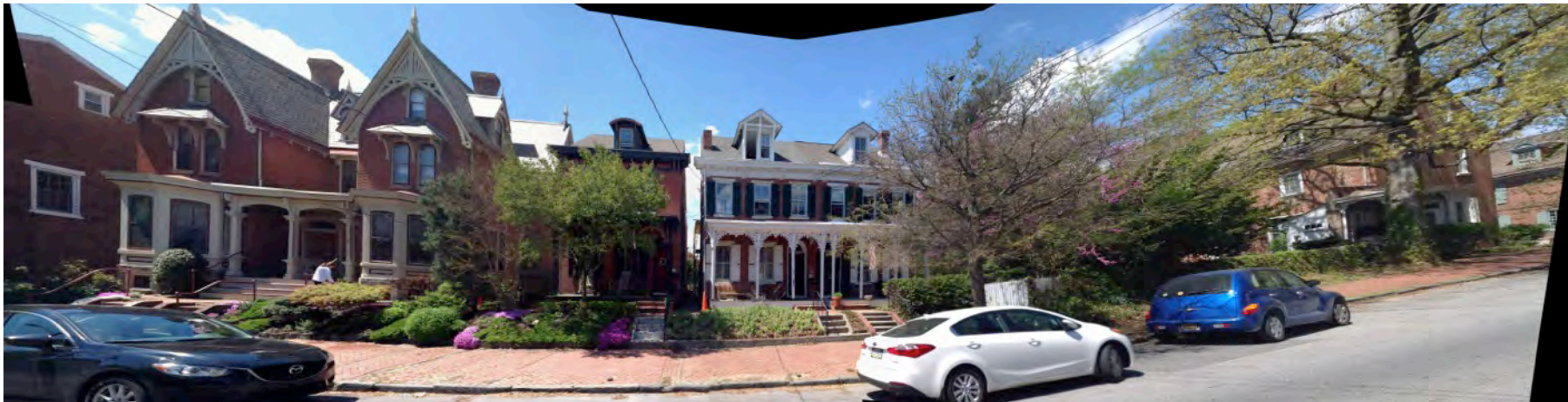


17 W 4<sup>th</sup>, c1879, 2<sup>nd</sup> Empire,  
Mansard roof



22-24 W 4<sup>th</sup>, Aquila Hizar Gothic Rev. c1880

16 W 4<sup>th</sup>, Italianate, c1881



# Homeowner historical research on “four frame dwellings” 1880-1904

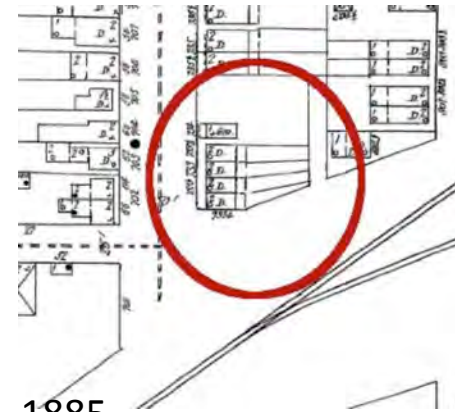
[http://nc-chap.org/resources/#title\\_chains](http://nc-chap.org/resources/#title_chains)

Courtesy Claire & Roger Clark 71 W. 4th St

Deed History - 71 W. 4th Street New Castle (formerly Vine St.)  
Parcel #210153-0212

|  |            |                   |
|--|------------|-------------------|
| Claire & Roger Clark                     | 1458-298   | 1/12/93           |
| Claire & Roger Clark                     | 1195-46    | 6/26/91           |
| Martin & Lee Biles                       | Q125-331   | 1/24/84           |
| Gail Pesina                              | C118-140   | 4/15/82           |
| Allan Cairncross/Pat Murdoch             | E101-297   | 4/23/81           |
| Pamela & Wm. Gallery                     | H83-645    | 1/14/70           |
| Pamela & Wm. Gallery                     | D80-365    | 1/24/68           |
| Pasquale & Olympia DiMondi               | C-80-435   | 1/11/68           |
| Trustees of New Castle Common            | A-46-549   | 5/8/46            |
| Wilma Schnetter & Mayor & Council of NCC | H-42-90    | (No date)         |
| Delaware Railroad Co.                    | G-43 pg. 7 | 2/27/42           |
| Emily & James Eliason                    | H-42-90    | 12/31/40          |
| Joseph & Mary Carlin                     | 1-27-33    |                   |
| Phila. Wilm. & Balt. RR                  | O-15 pg 1  | July 1, 1891      |
| N.C.-Frenchtown Railroad & Turnpike      |            | February 22, 1877 |

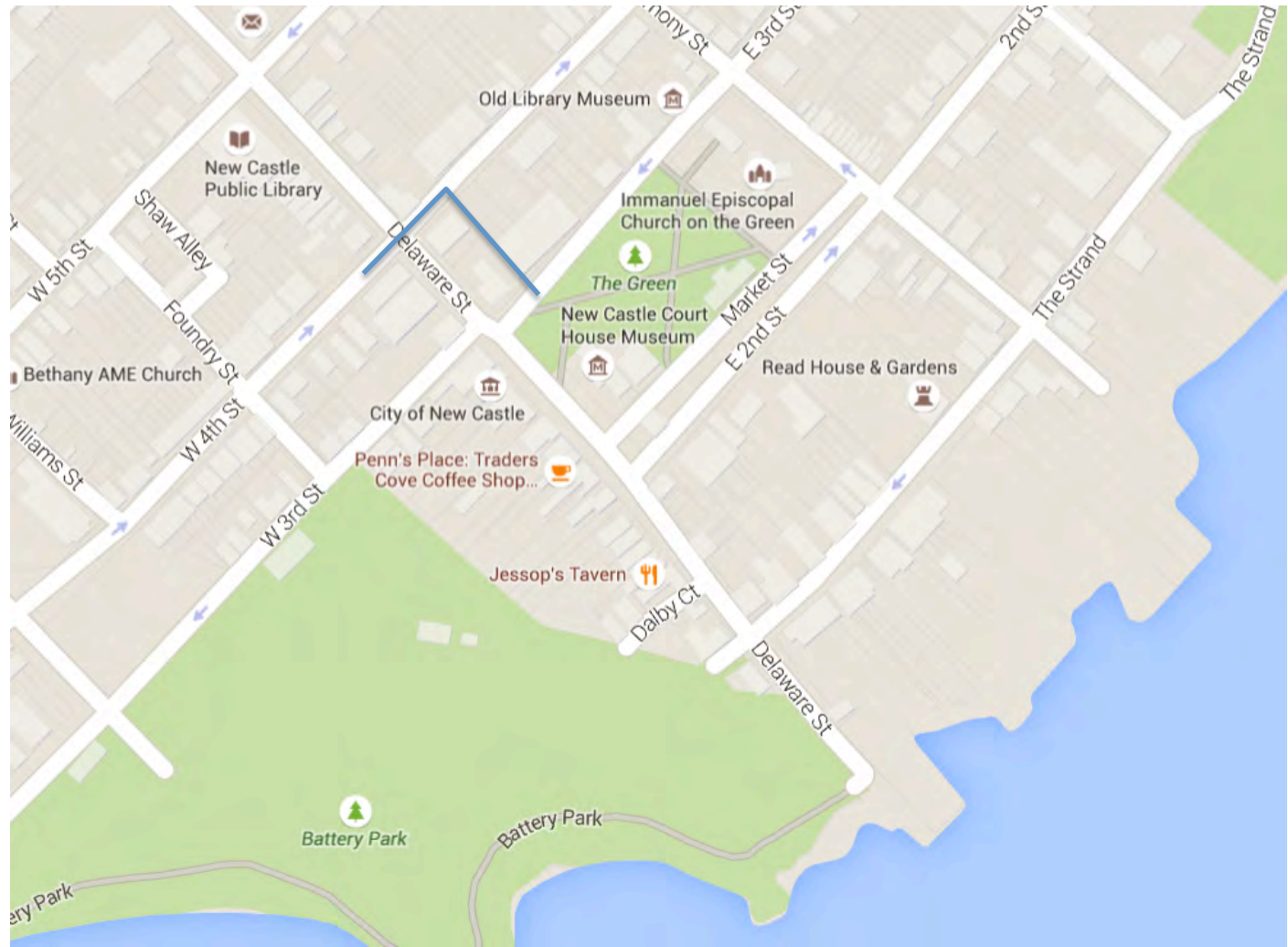
1901



1885



Cross Delaware to E 4th and go down Silsbee's Alley to E 3rd and the Green



10 E 4<sup>th</sup>, c1840  
One of a row of  
four houses

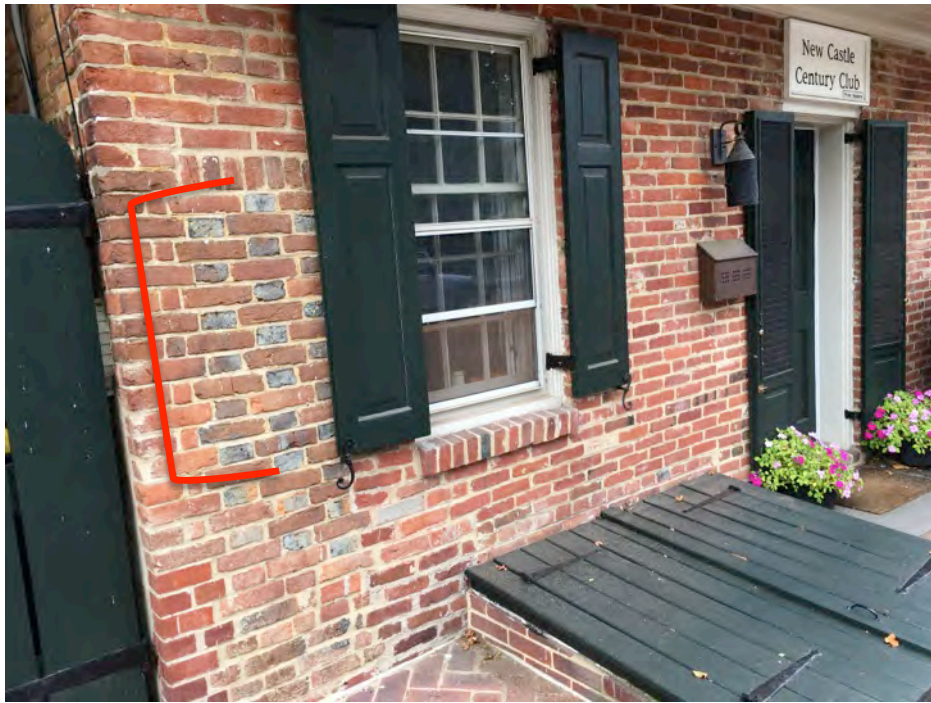
Greek revival  
Style:

Note small 3<sup>rd</sup>  
floor windows.  
“Frieze band”

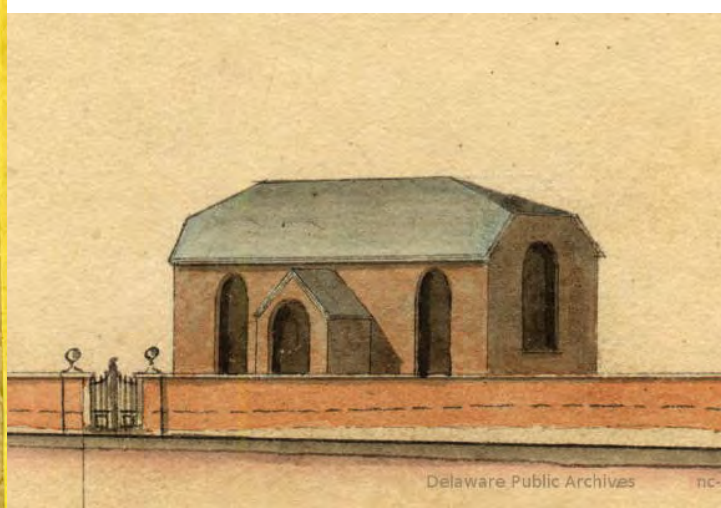
Transoms are  
rectangular or  
missing instead  
of fanlights in  
Federal style



18 E 4<sup>th</sup>, New Castle Century Club, Poorhouse  
Brickwork says the history of the building is complicated:  
There are sections of glazed header flemish bond (<1750)  
mixed with modern common bond.



# Immanuel Church on The Green









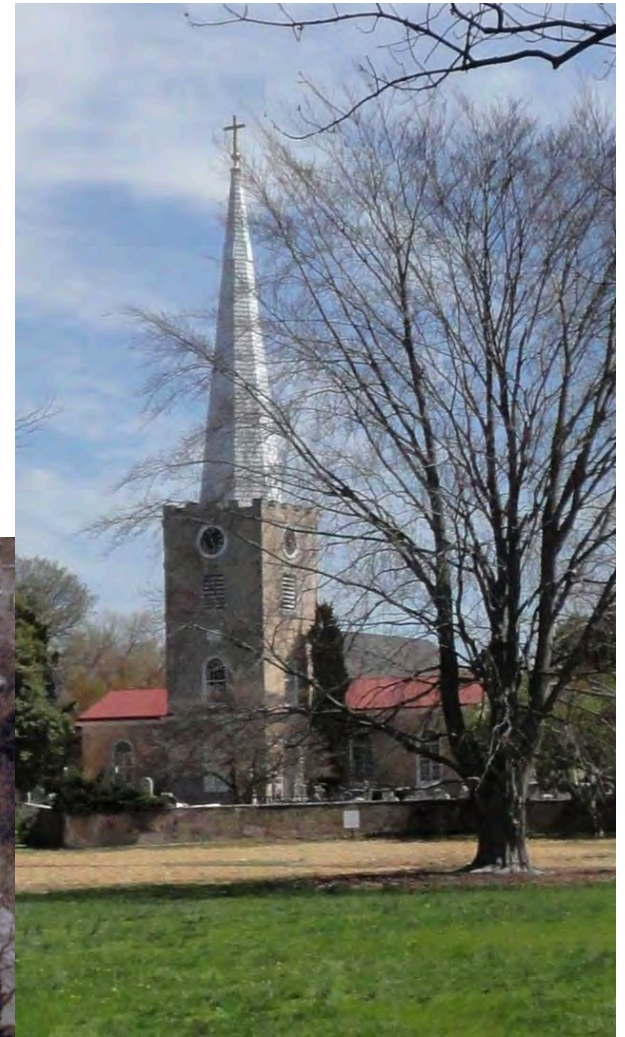
Last gas light, made by  
Morris Tasker Iron Co. New Castle



Old library, 1892, glass skylights

<http://nc-chap.org/history/NClibrary.php>





Gutted, 1980

Change Bell Ringing



**IMMANUEL ON THE GREEN**  
**New Castle, DE**

**6 bells**  
**Taylor**  
**1981**

**Tenor 3 cwt**  
**416 lbs**



Sheriff's office: one of the future parts First State National Park of the U.S. Park Service

Town hall, 1825, owned by the Trustees of New Castle Common. Originally with attached market in back, and two side rooms for fire engines.

[https://trusteesncc.org/2018 THE OLD TOWN HALL.pdf](https://trusteesncc.org/2018%20THE%20OLD%20TOWN%20HALL.pdf)



# Presbyterian Church & Christian Education Building



Delaware Historical Society 2002.46.1



Delaware Public Archives 267-015



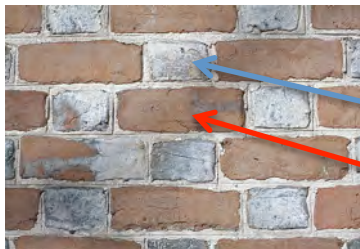
# The back of the Presbyterian Church demonstrates differences in very early vs early Georgian brickwork

English bond –  
Alternate rows of headers and stretchers



Stretchers  
Headers  
Stretchers  
Headers

Flemish bond –  
Each row alternates headers and stretchers

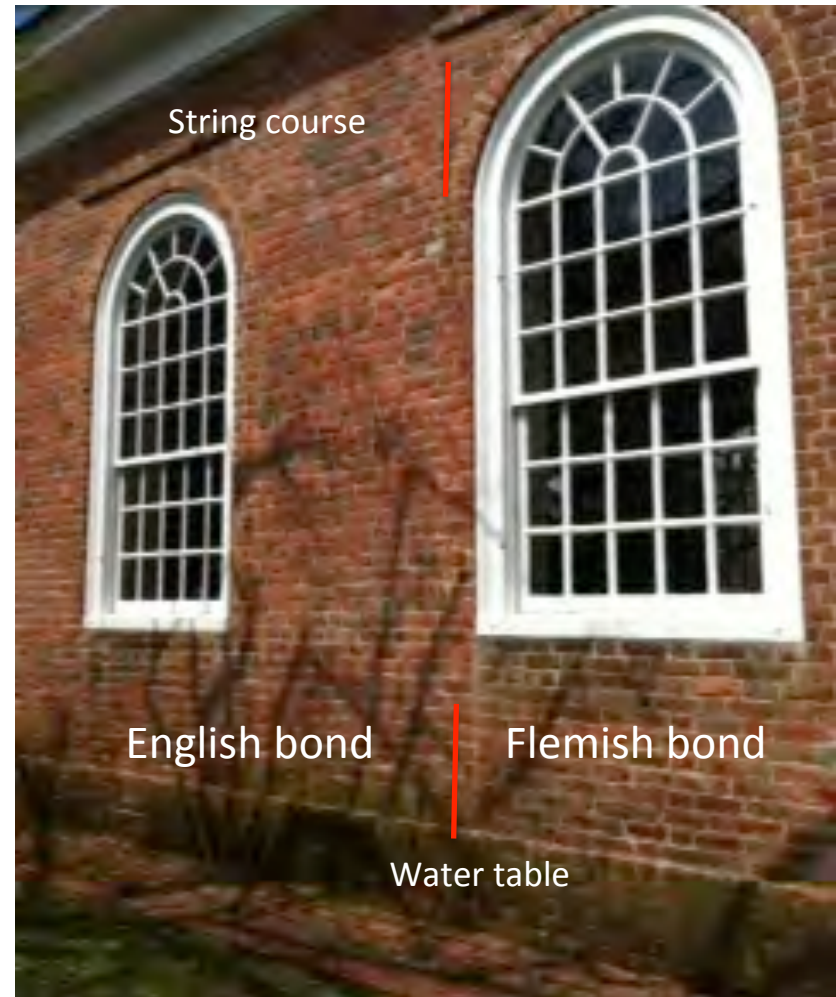


Header  
Stretcher

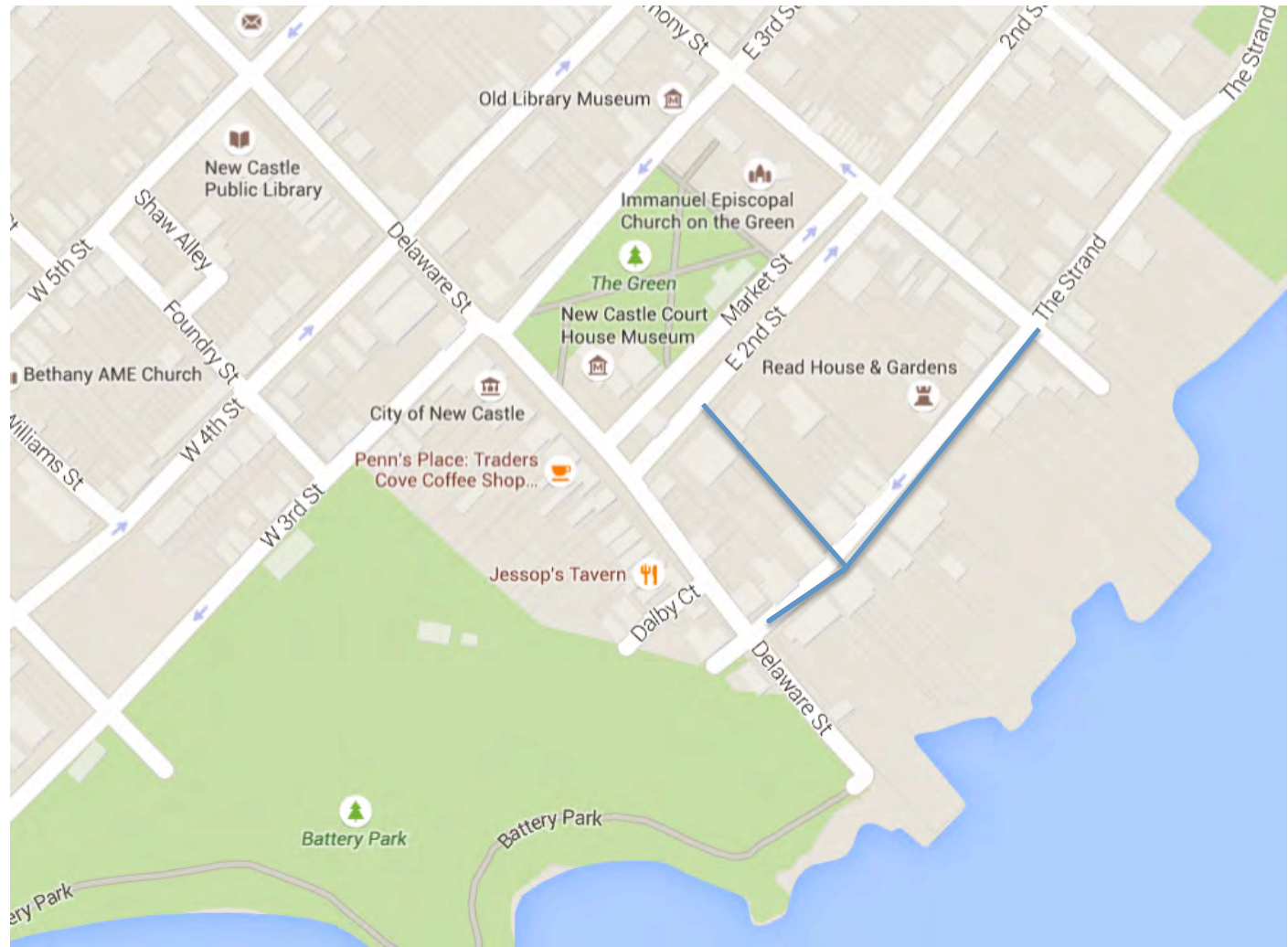
(glazed headers, from being near the smoke during the firing process)

1712

1719



# Through Church Alley to The Strand





# Looking down The Strand towards Delaware Street



# Site of the Dutch Tile House



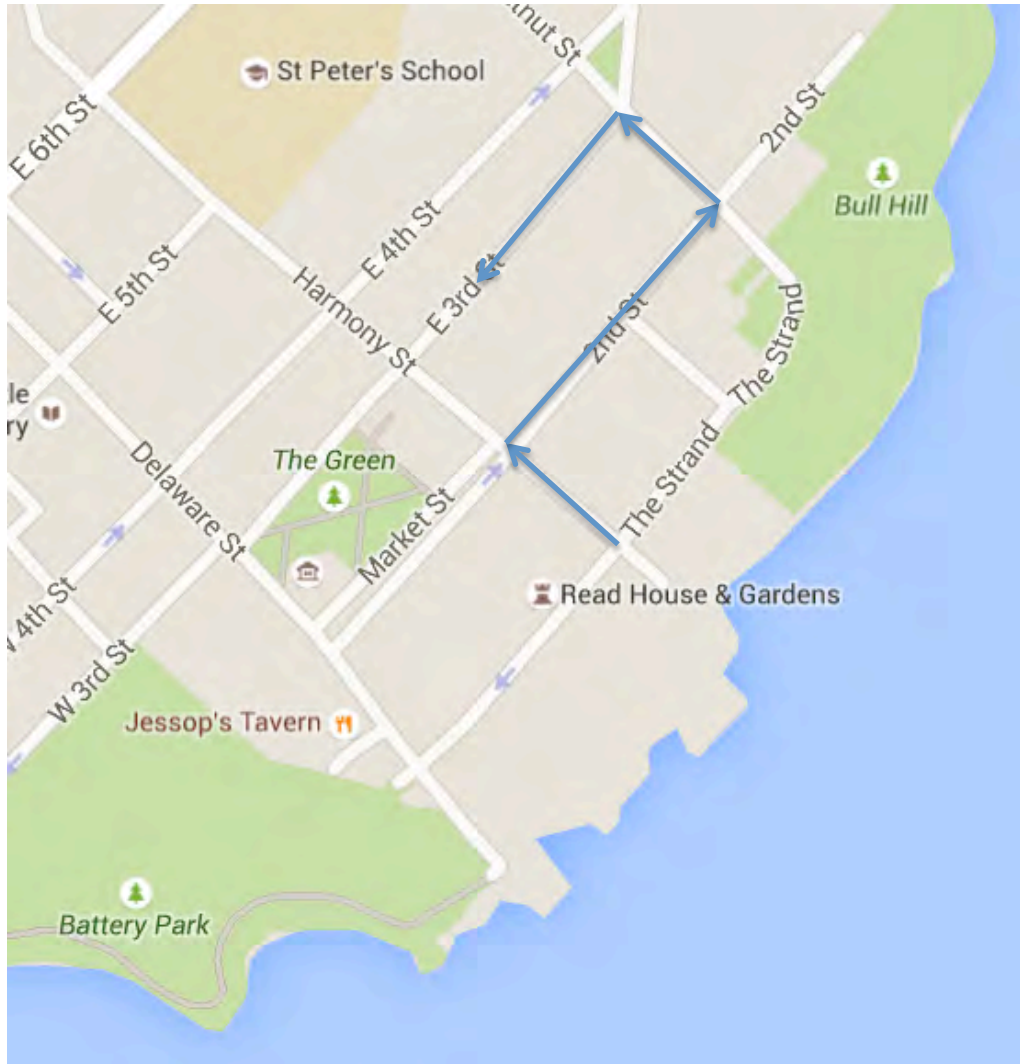
Built 1600's – 1687 ??

Destroyed 1884

Adjacent wall has remains of early neighboring buildings



Up Harmony to E 2nd, over to Chestnut and back on E 3rd towards starting point.



# King House

100 Harmony (at The Strand), c1850 (NHR)



# Old Icehouse (Colonial Revival)

103-105 Harmony



Loading ice blocks from 2<sup>nd</sup> floor of barn into wagon



Built over the foundations of 'Zippy' King's icehouse. Cellar with tall ceilings (12'?) and floor sloping to drain. Ice shipped from Maine. Built by Phillip Laird



# Colonial Revival (1990?)

107-109 Harmony, next to Ice House





# Rising Sun Tavern

Front part: 1796

Back part: 1801

Service window on side

Mantle trim in back probably done by Peter Crouding (Read House, Wiley House, Academy, Thomas Hotel – all ~1800)

There is a mill stone in the basement wall! (Probably local, not Dutch ☹ )

# Italianate Row Houses

Row of 10 Italianate Houses, 200 block of Harmony St.  
built by Wm. Herbert, State Treasurer, 1870's





# Spread Eagle Tavern

114 E 2<sup>nd</sup> c1750 (NHR)



# Bull Hill (c1850)



# Ira Lunt House

227 Chestnut, c1875



A Maine style house with attached barn. The latter was removed about 10 years ago.

Mr. Lunt was employed by a Maine contractor to build the ice piers. He and the granite for the piers was shipped down. Granite blocks of the house foundations are from Maine!

# Ira Lunt Daughters' Houses



Built by Ira Lunt in the 1920's. He died from a fall while working on one of these houses.

# Kit House

Aladdin Company, Order 10092,  
166 E 3<sup>rd</sup>, 1917 Stanhope #1, to A. H. Padberg,



**The Stanhope \$697.30** Price, Size No. 1, \$734.00  
Cash discount, 5%  
Net price, \$697.30

**A**RE you not pleased with the Stanhope? Can you conceive how with straight architectural lines any more pleasing or substantial style of construction could have been worked out? Notice what a strong yet artistic appearance is given the entire front by the heavy porch pedestals, square porch columns and porch rail.

How in keeping are the small lights in bungalow door and the upper divided lights in all windows. And when it comes to interior plan, it would be very difficult to work out a more convenient arrangement. The wide arch between living and dining rooms gives an appearance of one large room.

The double action door leading to a kitchen large enough, yet none too large, completes the living part of this compact, cosy home. Three well lighted, suitable sized bedrooms give as much sleeping room as is frequently found in a much larger home. For any one desiring a six-room modern house all on one floor, the Stanhope is a great favorite. The Aladdin read-cut system of construction offers you a big saving on this home. You are now able to dodge the high cost of building because you pay for no waste of materials or labor in erecting an Aladdin. Match this against the excessive cost of waste in building on the old-fashioned method. Then compare market prices with Aladdin prices and you will realize the big advantage offered you in the Aladdin read-cut system. It is estimated that 18% of the materials are wasted in building on the saw-measure-on-the-ground method. This means \$18 out of every \$100 is paid for waste actually lost! The Aladdin system has reduced this waste to less than 2%—put the \$18 in your pocket. Can you afford to build on any other plan? Do you care to make this saving? Ask us for names of customers—let them tell you in their own words. There are many owners of the Aladdin Stanhope throughout the country. Probably there is one near you. We will send you names of owners—you can pay them a visit and inspect their home and material. Study General Specifications on pages 12 and 13. Complete detail specifications will be sent you upon request. See Terms on page 2.




Floor Plan  
The Stanhope No. 1



Floor Plan  
The Stanhope No. 2



Price for the Stanhope size No. 2, \$830.00. Cash discount, 5%.  
Net price, \$788.50

# Foster House

159 E 3<sup>rd</sup>, late 1700's



A family member, Camille Foster, still lives in town and worked as a secretary for Immanuel church for years.

When she grew up in this house she remembers that the top floor bedrooms were not heated. In the winter, a glass of water by the bed would freeze.

# Martino Residence

158 E 3rd



“J. B. Vining House” (NHR)

c1840

Pick you own route back to your car via Harmony or Delaware Street  
I hope you have enjoyed the walk !

